

# STL140/..-5.0-H-BLACK-HT



## Technical Data

Wire Sizes		Insulating Material	
Solid min	-	Material	LCP
Solid max	-	Flammability Class	UL 94 V-0
Stranded (flexible) min	-	<b>Temperatures</b>	
Stranded (flexible) max	-	Operating Temperature	-30 °C 105 °C
Stranded with Ferrule min	-	<b>Wave Soldering Process</b>	
Stranded with Ferrule max	-	Soldering Temperature, recommended	265 °C
<b>Dimensions</b>		Peak Soldering Time, recommended	3 s / 10 s
Stripped Length	-	<b>Reflow Process</b>	
PCB Hole Diameter	1.5 mm	Soldering Temperature, recommended	217 - 245 °C
<b>Materials</b>		Peak Soldering Time, recommended	60 s
Contact Pin	Brass		

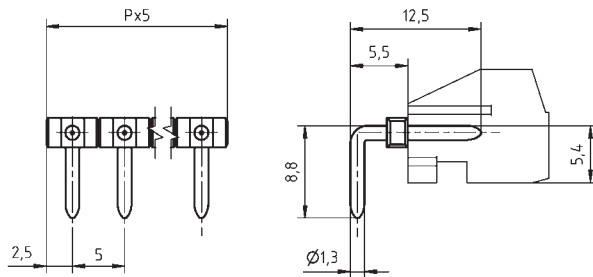
## Colours

■ BLACK, RAL 9011

Colours according to RAL, there may be variations on colour due to production conditions.

## Counterparts (Spacing 5.0 mm)

Terminal Block  
AK130



## Order Data (Spacing 5.0 mm)

Poles	Width (mm)	Article Designation	Article Number	PU
2	10.00	STL140/2-5.0-H-BLACK-HT	50140025101H	500
3	15.00	STL140/3-5.0-H-BLACK-HT	50140035101H	500
4	20.00	STL140/4-5.0-H-BLACK-HT	50140045101H	500
5	25.00	STL140/5-5.0-H-BLACK-HT	50140055101G	250
6	30.00	STL140/6-5.0-H-BLACK-HT	50140065101G	250
7	35.00	STL140/7-5.0-H-BLACK-HT	50140075101G	250
8	40.00	STL140/8-5.0-H-BLACK-HT	50140085101E	100
9	45.00	STL140/9-5.0-H-BLACK-HT	50140095101E	100
10	50.00	STL140/10-5.0-H-BLACK-HT	50140105101E	100
11	55.00	STL140/11-5.0-H-BLACK-HT	50140115101E	100
12	60.00	STL140/12-5.0-H-BLACK-HT	50140125101E	100
13	65.00	STL140/13-5.0-H-BLACK-HT	50140135101E	100
14	70.00	STL140/14-5.0-H-BLACK-HT	50140145101E	100
15	75.00	STL140/15-5.0-H-BLACK-HT	50140155101E	100
16	80.00	STL140/16-5.0-H-BLACK-HT	50140165101E	100
17	85.00	STL140/17-5.0-H-BLACK-HT	50140175101D	50
18	90.00	STL140/18-5.0-H-BLACK-HT	50140185101D	50
19	95.00	STL140/19-5.0-H-BLACK-HT	50140195101D	50
20	100.00	STL140/20-5.0-H-BLACK-HT	50140205101D	50
21	105.00	STL140/21-5.0-H-BLACK-HT	50140215101D	50
22	110.00	STL140/22-5.0-H-BLACK-HT	50140225101D	50

## Ratings



Usegroup	B	C	D	
Rated Voltage	300 V	-	300 V	200 V
Rated Current	10 A	-	10 A	7 A
Overvoltage Category				III
Test Voltage	1.6 kV	-	1.6 kV	4.0 kV
Pollution Degree				3