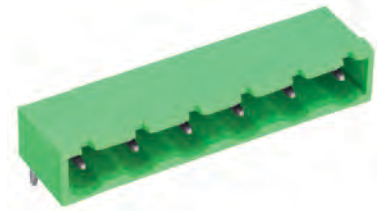


STLZ960/..G-7.62-H-GREEN



Technical Data

Wire Sizes		Insulating Material	
Solid min	-	Material	PA 6.6
Solid max	-	Flammability Class	UL 94 V-0
Stranded (flexible) min		Temperatures	
Stranded (flexible) max		Operating Temperature	
Stranded with Ferrule min		-30 °C 105 °C	
Stranded with Ferrule max		Wave Soldering Process	
		Soldering Temperature, recommended	
		265 °C	
		Peak Soldering Time, recommended	
		3 s / 10 s	
Dimensions		Reflow Process	
Stripped Length		Soldering Temperature, recommended	
PCB Hole Diameter		-	
Materials		Soldering Temperature, recommended	
Contact Pin	Copper Alloy	Peak Soldering Time, recommended	
		-	

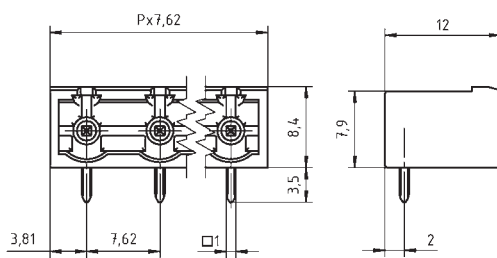
Colours

GREEN, RAL 6018
 LIGHT GREEN, similar RAL 6018

Colours according to RAL, there may be variations on colour due to production conditions. Special colours on request.

Counterparts (Spacing 7.62 mm)



Terminal Block
AKZ960



Order Data (Spacing 7.62 mm)

Poles	Width (mm)	Article Designation	Article Number	PU
2	15.24	STLZ960/2G-7.62-H-GREEN	50960025021E	100
3	22.86	STLZ960/3G-7.62-H-GREEN	50960035021E	100
4	30.48	STLZ960/4G-7.62-H-GREEN	50960045021E	100
5	38.10	STLZ960/5G-7.62-H-GREEN	50960055021E	100
6	45.72	STLZ960/6G-7.62-H-GREEN	50960065021D	50
7	53.34	STLZ960/7G-7.62-H-GREEN	50960075021D	50
8	60.96	STLZ960/8G-7.62-H-GREEN	50960085021D	50
9	68.58	STLZ960/9G-7.62-H-GREEN	50960095021D	50
10	76.20	STLZ960/10G-7.62-H-GREEN	50960105021D	50
11	83.82	STLZ960/11G-7.62-H-GREEN	50960115021D	50
12	91.44	STLZ960/12G-7.62-H-GREEN	50960125021D	50
13	99.06	STLZ960/13G-7.62-H-GREEN	50960135021D	50
14	106.68	STLZ960/14G-7.62-H-GREEN	50960145021D	50
15	114.30	STLZ960/15G-7.62-H-GREEN	50960155021D	50
16	121.92	STLZ960/16G-7.62-H-GREEN	50960165021D	50

Accessories

Figure	Designation	Article Number
	Coding Star CS2-5.0/5.08-RED	50000000024
	Separating Element SE-STL950-GREEN	50950000002

See pages 282 ff for detail and general accessories and see pages 12/13 concerning services.

Ratings



Usegroup	B	C	D	
Rated Voltage	300 V	150 V	300 V	400 V
Rated Current	15 A	15 A	10 A	12 A
Overvoltage Category				III
Test Voltage	1.6 kV	1.3 kV	1.6 kV	6.0 kV
Pollution Degree				3