



AK790/..-5.0-V-GREEN

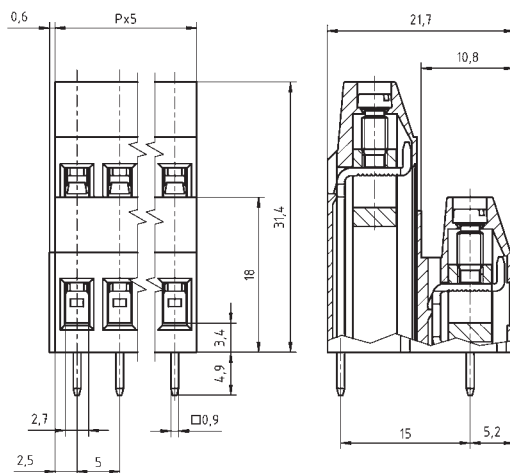
Technical Data

Wire Sizes		Insulating Material	
Solid min	0.2 mm ²	Material	PA 6.6
Solid max	4.0 mm ²	Flammability Class	UL 94 V-0
Stranded (flexible) min	0.2 mm ²	Temperatures	
Stranded (flexible) max	2.5 mm ²	Operating Temperature	-30 °C - 105 °C
Stranded with Ferrule min	0.25 mm ²	Wave Soldering Process	
Stranded with Ferrule max	2.5 mm ²	Soldering Temperature, recommended	265 °C
Dimensions		Peak Soldering Time, recommended	3 s / 10 s
Stripped Length	8.0 mm	Reflow Process	
PCB Hole Diameter	1.3 mm	Soldering Temperature, recommended	-
Materials		Peak Soldering Time, recommended	-
Clamp	Brass		
Screw	Steel		
Solder Tag	Copper Alloy		

Colours

 GREEN, RAL 6018  LIGHT GREEN, similar RAL 6018





Colours according to RAL, there may be variations on colour due to production conditions. Special colours on request.



Order Data (Spacing 5.0 mm)

Poles	Width (mm)	Article Designation	Article Number	PU
2	10.60	AK790/2-5.0-V-GREEN	50790020201D	50
3	15.60	AK790/3-5.0-V-GREEN	50790030201D	50
4	20.60	AK790/4-5.0-V-GREEN	50790040201D	50
5	25.60	AK790/5-5.0-V-GREEN	50790050201D	50
6	30.60	AK790/6-5.0-V-GREEN	50790060201D	50
7	35.60	AK790/7-5.0-V-GREEN	50790070201D	50
8	40.60	AK790/8-5.0-V-GREEN	50790080201D	50
9	45.60	AK790/9-5.0-V-GREEN	50790090201D	50
10	50.60	AK790/10-5.0-V-GREEN	50790100201D	50
11	55.60	AK790/11-5.0-V-GREEN	50790110201D	50
12	60.60	AK790/12-5.0-V-GREEN	50790120201D	50

Accessories

Figure	Designation	Article Number
	Bridge, 2-pole, insulated, BR/2-5.0/5.08-LIGHT GREY	50000000006
	Bridge, 3-pole, insulated, BR/3-5.0/5.08-LIGHT GREY	50000000007
	Bridge, 2-pole, BR/2-5.0/5.08-L7.0	50000000008
	Screw Cover SC-AK700-YELLOW	50700000004

See pages 282 ff for detail and general accessories and see pages 12/13 concerning services.

Ratings



Usegroup	B	C	D	250 V	
Rated Voltage	300 V	150 V	300 V	250 V	
Rated Current	20 A	20 A	10 A	24 A	
Rated Wire Size				min	max
	solid	AWG 30-12	AWG 30-12	AWG 30-12	0.5 mm ² / 4.0 mm ²
	stranded	AWG 30-12	AWG 30-12	AWG 30-12	0.5 mm ² / 2.5 mm ²
Torque	0.45 Nm			0.50 Nm	
Screw Size	M3			M3	
Test Voltage	1.6 kV		1.3 kV	1.6 kV / 2.0 kV	